



SDI

MULTIVIEWER

User Manual



Index

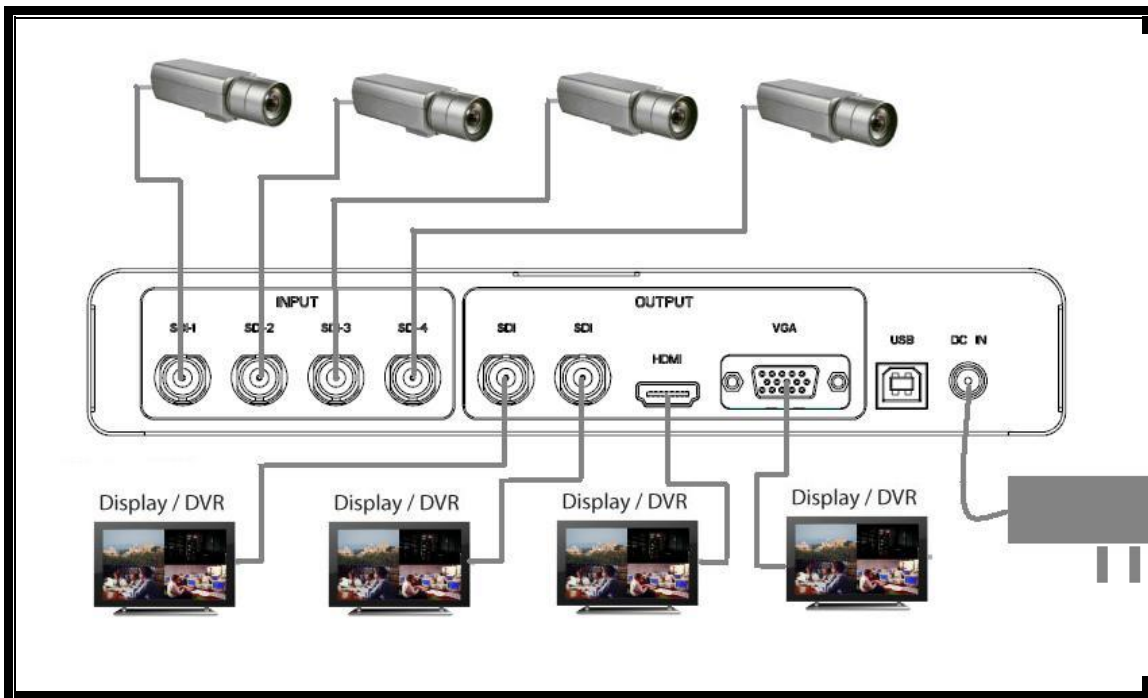
Feature	3
Install Diagram	4
Rear Panel.....	4
Front Panel.....	5
Display Mode.....	5
Specifications.....	7
Firmware Upload	8

- Allow up to four different SDI sources to be display in multiplex style in one monitor
- Independent scaling with anti-aliasing
- Supports HD formats:
 - 720p50 & 60
 - 1080i50 & 60
 - 1080p24, 25, 30, 50 & 60
- Support 525i & 625i SD D1 format
- Support up to 7.1ch of audio output
- Auto 3G/HD/SD-SDI detection
- HDMI 1.3 supported
- SDI compliant outputs
- D-Sub output
- Firmware is upgradable in the field using the integrated USB port
- The converter is Plug-and-Play

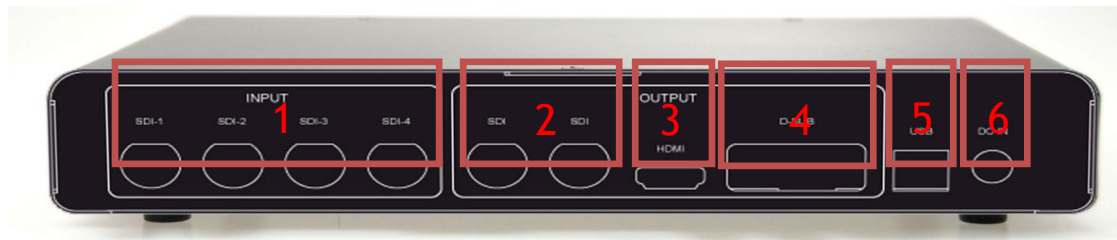
SDI Multiplexer



Install Diagram

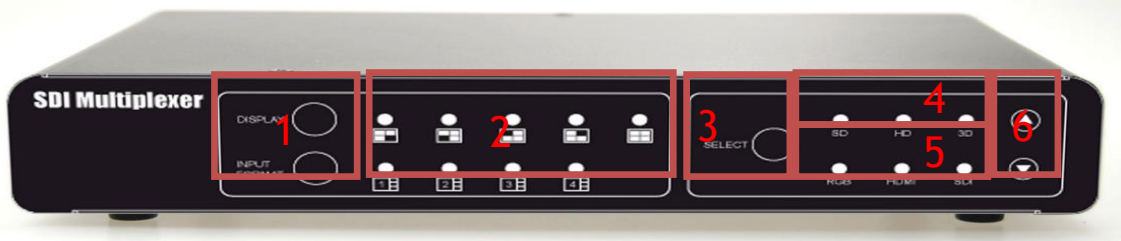


Rear Panel



NO	Component	Function
1	SDI Input Port x4	From your SDI Source plug into these ports
2	SDI Output Port x 2	From your SDI Display Device plug into these ports
3	VGA Output Port	From your VGA Display device plug into these ports
4	HDMI Output Port	Form your HDMI Display device plug into these ports
5	USB Port	Upgrade firmware/Control SDI MUX Box
6	Power Jack	The Power adapter plug into here.

Front Panel



NO	Component	Function
1	Display/Sub-Display Port Buttons	Select Display mode (Main-5 mode)
2	Display mode LEDs	The LEDs is indicate display mode
3	Information	Display Input/output of Inforamtion
4	SD/HD/3G LEDs	The LEDs is indicate input the format
5	VGA/HDMI/SDI LEDs	The LEDs is indicate output port
6	Output Port Buttons	Select output port by Up/Down button

Display Mode

MAIN DISPLAY MODE	DESCRIPTION
	One of each is Displayed on the full screen.
	Four Channels is Displayed on the full screen. Sound is muted.
	Main Channel is displayed on Left side windows at the same time as other channels are displayed on right side window. Sound is usually from the main channel only.
	Main Channel is displayed on the full screen at the same time as other channels are displayed in inset windows. Sound is usually from the main channel only.
	One of each is sequence displayed on the full screen.

SUB DISPLAY MODE	DESCRIPTION
1	Display Channel 1 video and audio on the full screen
2	Display Channel 2 video/audio and full screen window
3	Display Channel 3 video/audio and full screen window
4	Display Channel 4 video/audio and full screen window

Specifications

DESCRIPTION	
Support Video Resolution	3G-SDI – 1920 x 1080p @ 50/59.94/60fps HD-SDI – 1280 x 720p @ 50/59.94/60fps 1920 x 1080i @ 50/60fps 1920 x 1080p @ 23.97/24/25/29.97/30fps SD-SDI – 720 x 480i (NTSC) / 720 x 576i (PAL)
Output Format	1920 x 1080p @ 50/59.94/60fps 1280 x 720p @ 50/59.94/60fps 1920 x 1080i @ 50/60fps 1920 x 1080p @ 23.97/24/25/29.97/30fps 720 x 480i (NTSC) / 720 x 576i (PAL) <i>(Default: 1920 x 1080p @ 60fps)</i>
SDI Format	3G-SDI, HD-SDI & SD-SDI
Audio Support	7.1ch/5.1ch/Stereo
Coaxial Cable Type	RG6/RG59(75 Ω)
Cable Length Performance	3G-SDI: 140m of RG6 100m of RG59 HD-SDI: 200m of RG6 140m of RG59 SD-SDI: 400m of RG6 280m of RG59
Input	4 x BNC [SDI]
Output	2 x BNC [SDI] 1 x HDMI 1 x D-Sub
BNC Connector	3G 75 Ω inter-locked socket
HDMI Connector	TYPE A [19-pin female]
USB Connector	USB B-Type
Display Mode	5
Housing	SECC
Dimension	L:235.9mm x W145.8mm xH:40.2mm
Power Source	Power Adapter: AC 100 ~ 240 V/DC (+6 ~ 15 V)
Operation Temperature	0~50°C [32~114°F]

Storage Temperature

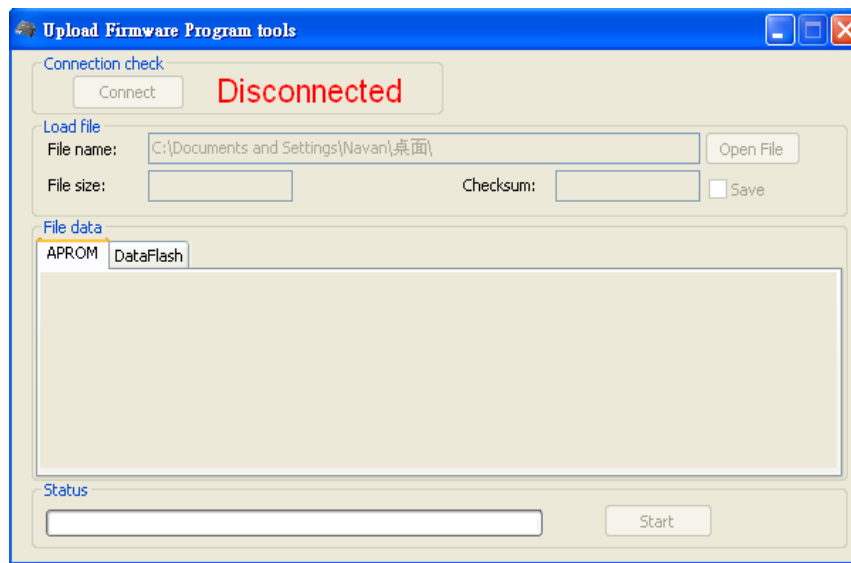
-20~+60°C

Firmware Upload

- Firmware is upgradable in the field using the integrated USB port

How to Firmware upgrade:

Step 1. Open Upload Firmware Program tools.exe and connect USB and PC by USB Cable. (If first connector, the PC has auto installer Driver)



Step 2. Plug and Play AC power

Step 3. Push Connect Button and Select Firmware File (Bin File)

