



# SDI

# MULTIVIEWER

---

## *User Guide*



Index

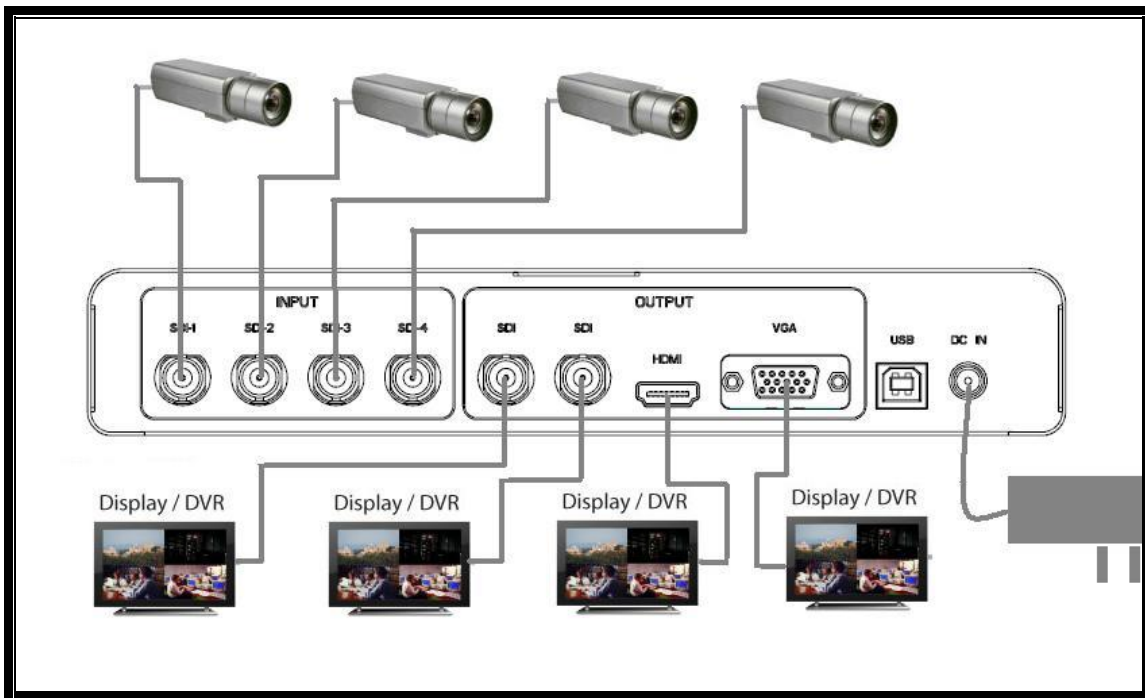
|                       |   |
|-----------------------|---|
| Feature .....         | 3 |
| Install Diagram ..... | 4 |
| Rear Panel.....       | 4 |
| Front Panel.....      | 5 |
| Display Mode.....     | 5 |
| Specifications.....   | 7 |
| Firmware Upload ..... | 8 |

- Allow up to four different SDI sources to be display in multiplex style in one monitor
- Independent scaling with anti-aliasing
- Supports HD formats:
  - 720p50 & 60
  - 1080i50 & 60
  - 1080p24, 25, 30, 50 & 60
- Support 525i & 625i SD D1 format
- Support up to 7.1ch of audio output
- Auto 3G/HD/SD-SDI detection
- HDMI 1.3 supported
- SDI compliant outputs
- D-Sub output
- Firmware is upgradable in the field using the integrated USB port
- The converter is Plug-and-Play

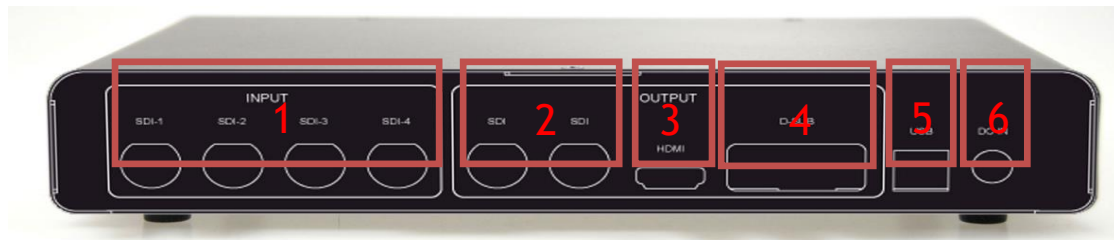
## SDI Multiplexer



## Install Diagram

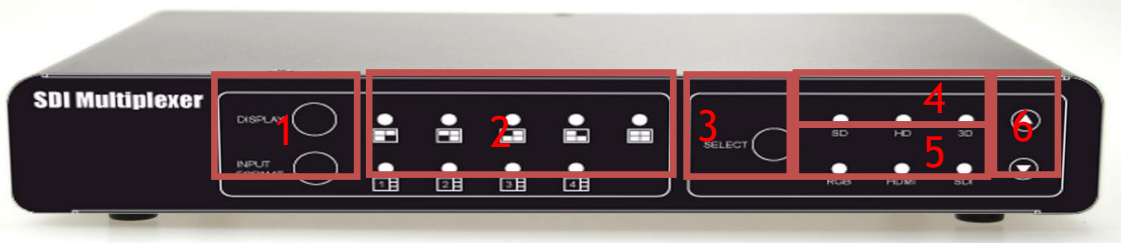


## Rear Panel



| NO | Component           | Function  |
|----|---------------------|---|
| 1  | SDI Input Port x4   | From your SDI Source plug into these ports          |
| 2  | SDI Output Port x 2 | From your SDI Display Device plug into these ports  |
| 3  | VGA Output Port     | From your VGA Display device plug into these ports  |
| 4  | HDMI Output Port    | Form your HDMI Display device plug into these ports |
| 5  | USB Port            | Upgrade firmware/Control SDI MUX Box                |
| 6  | Power Jack          | The Power adapter plug into here.                   |

## Front Panel



| NO | Component                        | Function                              |
|----|----------------------------------|---------------------------------------|
| 1  | Display/Sub-Display Port Buttons | Select Display mode (Main-5 mode)     |
| 2  | Display mode LEDs                | The LEDs is indicate display mode     |
| 3  | Information                      | Display Input/output of Inforamtion   |
| 4  | SD/HD/3G LEDs                    | The LEDs is indicate input the format |
| 5  | VGA/HDMI/SDI LEDs                | The LEDs is indicate output port      |
| 6  | Output Port Buttons              | Select output port by Up/Down button  |

## Display Mode

| MAIN DISPLAY MODE | DESCRIPTION  |
|-------------------|--|
|                   | One of each is Displayed on the full screen.   |
|                   | Four Channels is Displayed on the full screen. Sound is muted.   |
|                   | Main Channel is displayed on Left side windows at the same time as other channels are displayed on right side window. Sound is usually from the main channel only. |
|                   | Main Channel is displayed on the full screen at the same time as other channels are displayed in inset windows. Sound is usually from the main channel only.       |
|                   | One of each is sequence displayed on the full screen.  |

| SUB<br>DISPLAY MODE | DESCRIPTION  |
|---------------------|--|
| 1                   | Display Channel 1 video and audio on the full screen |
| 2                   | Display Channel 2 video/audio and full screen window |
| 3                   | Display Channel 3 video/audio and full screen window |
| 4                   | Display Channel 4 video/audio and full screen window |

## Specifications

| DESCRIPTION              |  |
|--------------------------|--|
| Support Video Resolution | 3G-SDI – 1920 x 1080p @ 50/59.94/60fps<br>HD-SDI – 1280 x 720p @ 50/59.94/60fps<br>1920 x 1080i @ 50/60fps<br>1920 x 1080p @<br>23.97/24/25/29.97/30fps<br>SD-SDI – 720 x 480i (NTSC) / 720 x 576i (PAL)             |
| Output Format            | 1920 x 1080p @ 50/59.94/60fps<br>1280 x 720p @ 50/59.94/60fps<br>1920 x 1080i @ 50/60fps<br>1920 x 1080p @ 23.97/24/25/29.97/30fps<br>720 x 480i (NTSC) / 720 x 576i (PAL)<br><b>(Default: 1920 x 1080p @ 60fps)</b> |
| SDI Format               | 3G-SDI, HD-SDI & SD-SDI  |
| Audio Support            | 7.1ch/5.1ch/Stereo   |
| Coaxial Cable Type       | RG6/RG59(75Ω)  |
| Cable Length Performance | 3G-SDI: 140m of RG6<br>100m of RG59<br>HD-SDI: 200m of RG6<br>140m of RG59<br>SD-SDI: 400m of RG6<br>280m of RG59  |
| Input                    | 4 x BNC [SDI]  |
| Output                   | 2 x BNC [SDI]<br>1 x HDMI<br>1 x D-Sub   |
| BNC Connector            | 3G 75 Ω inter-locked socket  |
| HDMI Connector           | TYPE A [19-pin female]   |
| USB Connector            | USB B-Type   |
| Display Mode             | 5  |
| Housing                  | SECC   |
| Dimension                | L:235.9mm x W145.8mm xH:40.2mm   |
| Power Source             | Power Adapter: AC 100 ~ 240 V/DC (+6 ~ 15 V)   |

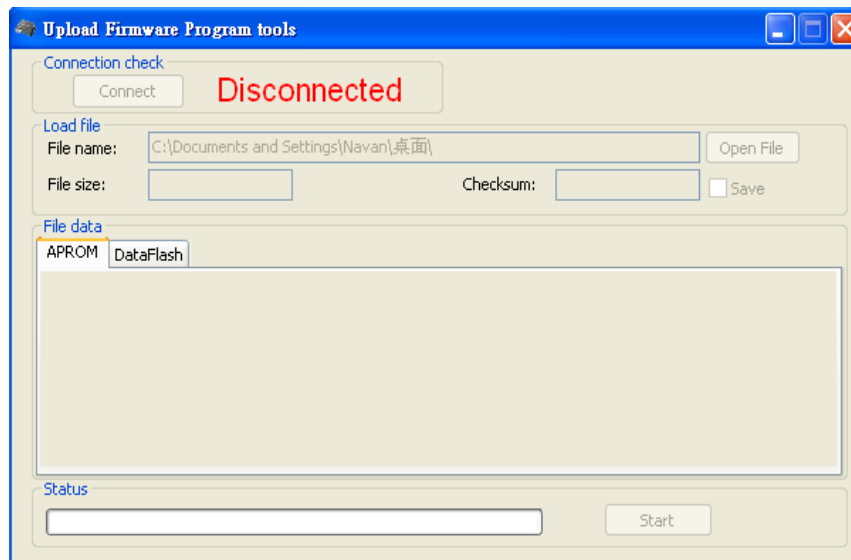
|                       |                   |
|-----------------------|-------------------|
| Operation Temperature | 0~50°C [32~114°F] |
| Storage Temperature   | -20~+60°C         |

## Firmware Upload

- Firmware is upgradable in the field using the integrated USB port

How to Firmware upgrade:

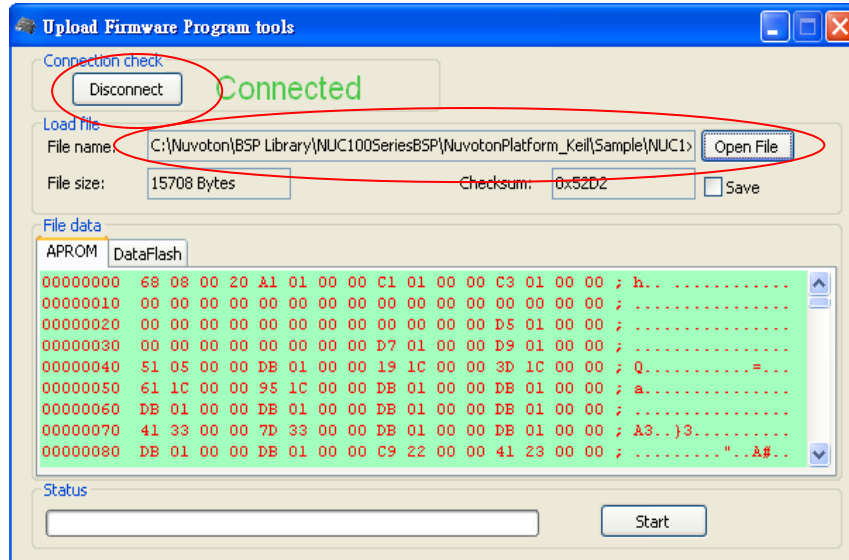
Step 1. Open Upload Firmware Program tools.exe and connect USB and PC by USB Cable. (If first connector, the PC has auto installer Driver)



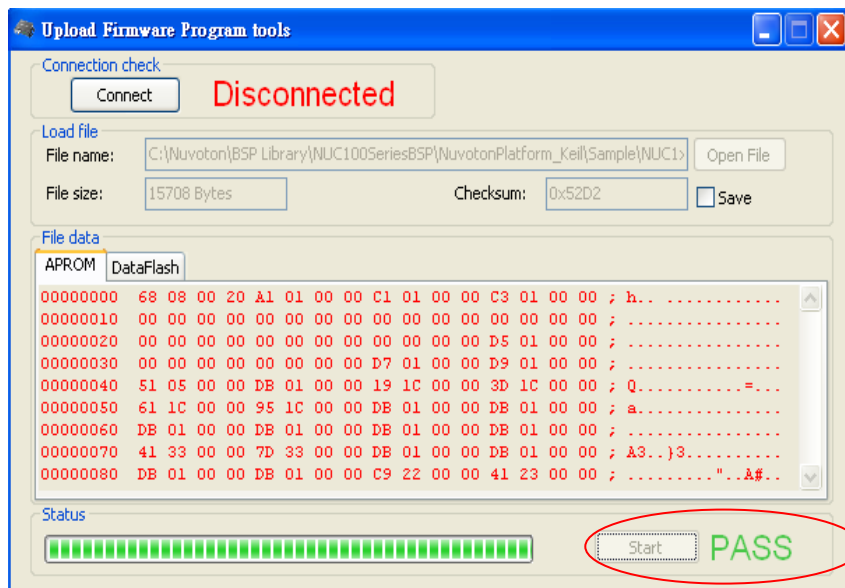
Step 2. Plug and Play AC power

Step 3. Push Connect Button and Select Firmware File (Bin File)





#### Step 4. Push Start Button



#### Step 5. Close Upload Firmware Program tools

