

# SDI Splitter One<sup>2</sup>Four

---

## User Guide





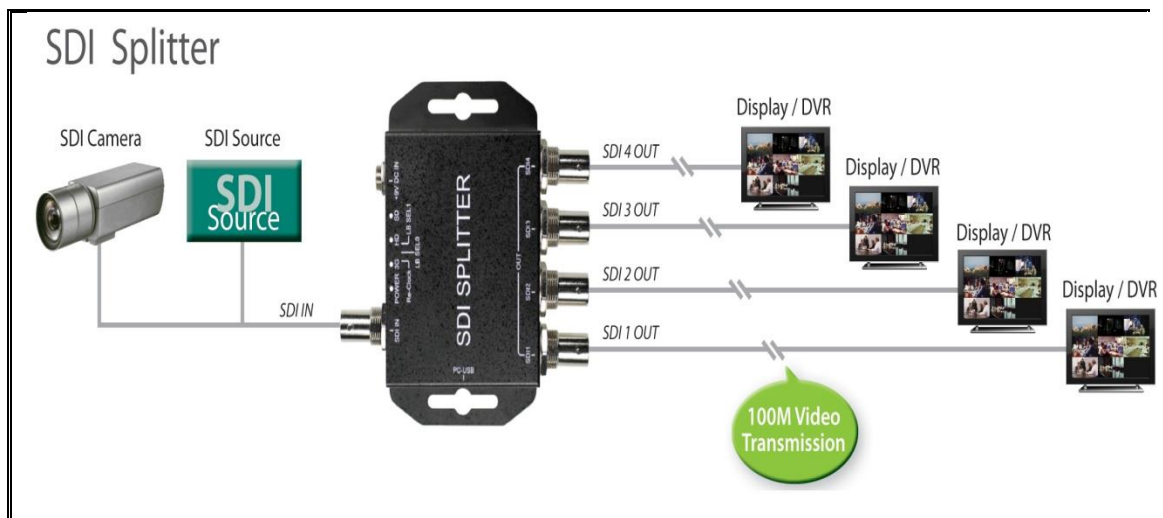
Index

Feature .....	3
Front Panel.....	4
Rear Panel.....	4
Dip Switch.....	5
Specifications.....	6
Firmware Upload .....	7

## Feature

The SDI Splitter Distribution Amplifier allows a single SDI, HD-SDI or 3G-SDI video source to be distributed to (without loss of signal) four HD SDI/HDSDI/3GSDI devices at the same time.

- Easily distribute one 3G-SDI source to four 3G-SDI devices.
- Our separately buffered outputs.
- Transmitter Rate LED indication
- Lock LED indication
- Pass all ancillary data.
- Easy installation

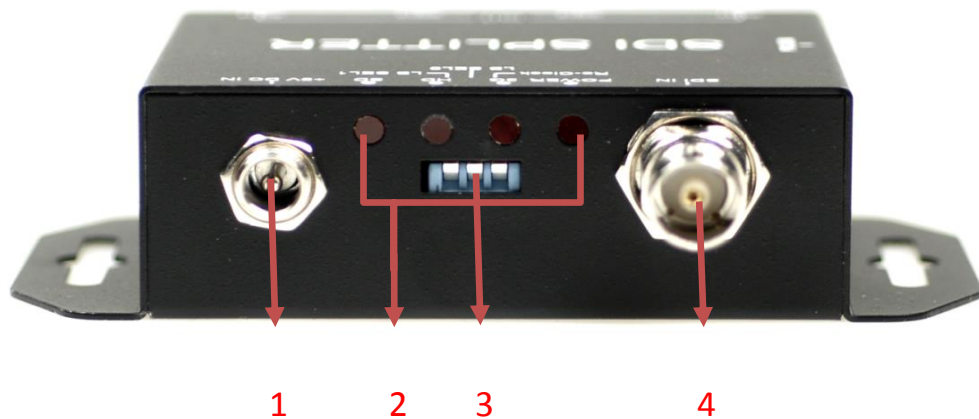


## Front Panel





1. 3G/HD/SD-SDI Output 1
2. 3G/HD/SD-SDI Output 2
3. 3G/HD/SD-SDI Output 3
4. 3G/HD/SD-SDI Output 4

## Rear Panel



1. Power (+6V ~ + 15V)
2. 3G/HD/SD/Power LED indicator
3. Dip Switch:

	
Pin On (↑): Enable	Pin OFF (↓): Disable

- a. Re-Clock
- b. LB SEL0
- c. LB SEL1
4. SDI Input

## **Dip Switch**

---

- Re-clock: Receives a signal and retransmits it at a higher level and/or higher power, or onto the other side of an obstruction, so that the signal can cover longer distances.
- SB SEL0: (N/A)
- SB SEL1: (N/A)

## Specifications

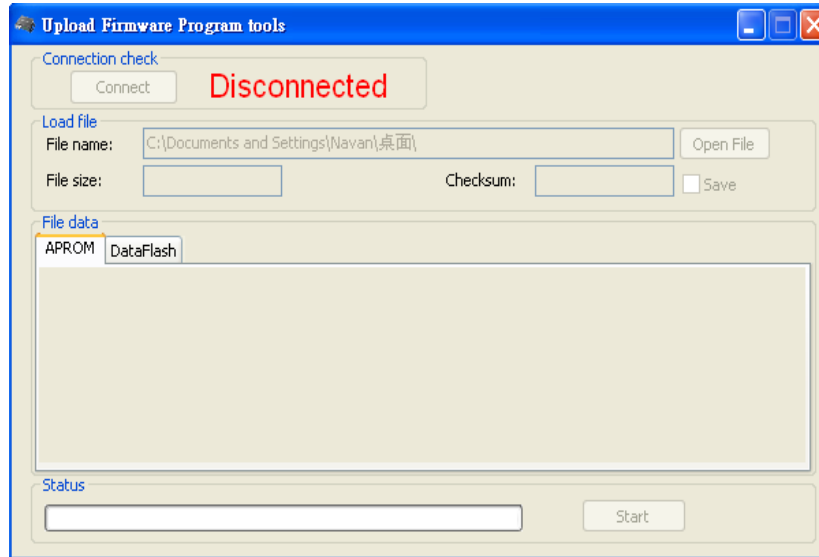
DESCRIPTION	
Support Video Resolution	SD – 720 x 480 i / 720 x 576 i HD– 1280 x 720 p 1920 x 1080 50i/60i 1920 x 1080 24p/30p 3G– 1920 x 1080 50p/60p 2K– 2048 x 1080 24p/30p
SDI format	SD-SDI(SMPTE 259M) HD-SDI(SMPTE 292M) 3G-SDI (SMPTE 494M/495M)
Audio Support	7.1ch/5.1ch/Stereo
Re-clock Function	Yes (Dip Switch)
Coaxial Cable Type	RG6/RG59(75 Ω)
Cable Equalization	3G: 140m of RG6 100m of RG59 HD: 200m of RG6 140m of RG59 SD: 400m of RG6 280m of RG59
Input	1 x BNC [SDI]
Output	4 x BNC [SDI]
BNC Connector	3G 75 Ω inter-locked socket
DIP Switch	3-pin [Re-clock / LED mode / NA]
Housing	SECC
Dimension	L:104mm x W:63.3mm xH:26mm
Power Source	Power Adapter: AC 100 ~ 240 V/DC (+6 ~ 15 V)
Operation Temperature	0~50°C [32~114°F]
Storage Temperature	-20~+60°C

## Firmware Upload

- Firmware is upgradable in the field using the integrated USB port

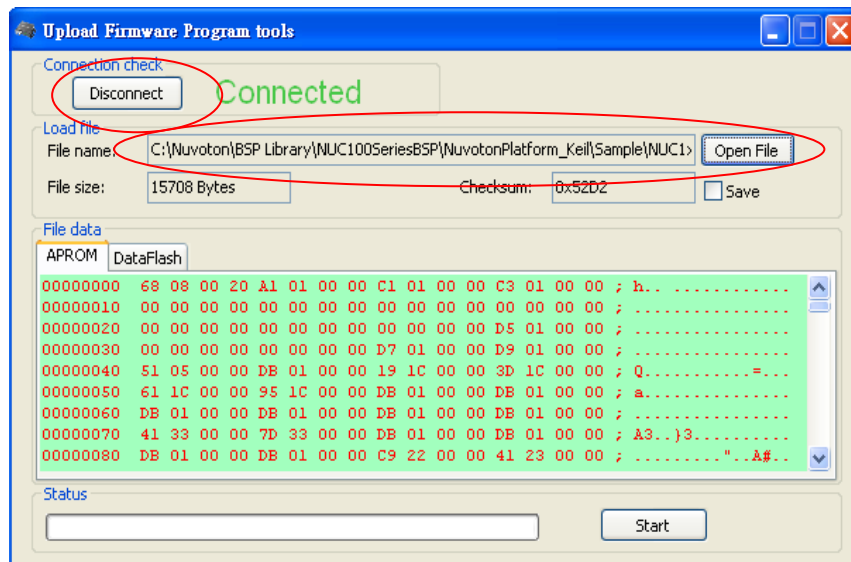
How to Firmware upgrade:

Step 1. Open Upload Firmware Program tools.exe and connect USB and PC

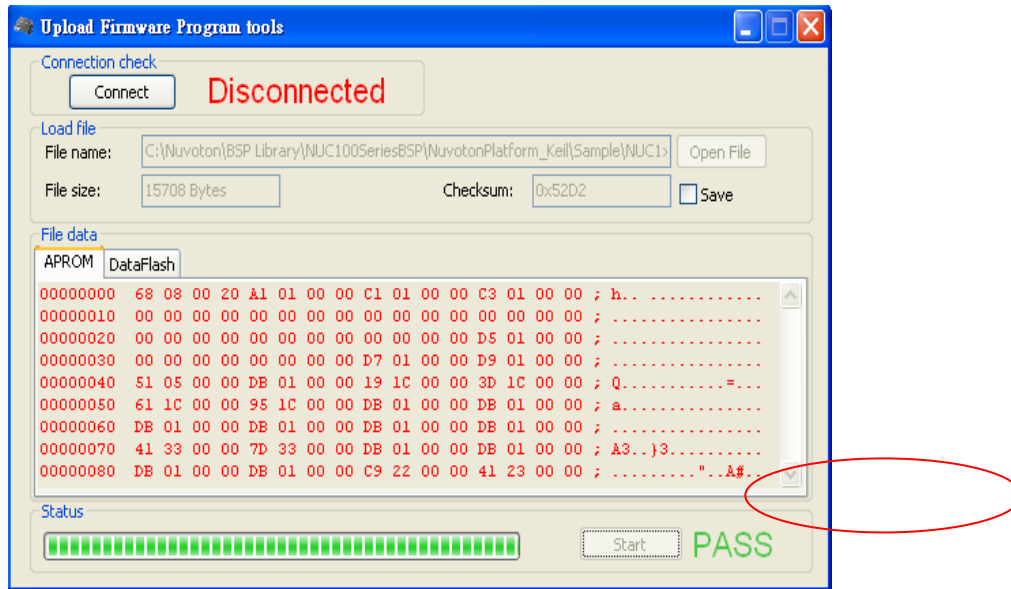


Step 2. Plug and Play AC power

Step 3. Push Connect Button and Select Firmware File (Bin File)



Step 4. Push Start Button



Step 5. Close Upload Firmware Program tools

